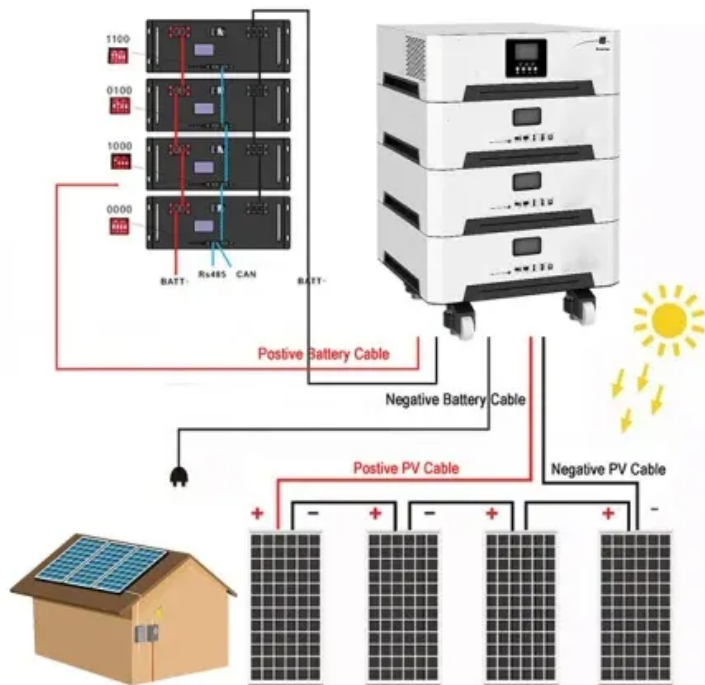


NKOSITHANDILEB SOLAR

24V small inverter



Overview

What is a 24V inverter?

A 24V inverter is a power conversion device whose main function is to convert 24V DC power into AC power (usually 220V or 110V, depending on the specific model and application). The DC to AC power inverters offer you 110V, 120V, 220V, 230V, or 240V AC energy to charge your electronics or appliances.

What is a 24V 600W inverter?

Inverter for home has overload protection, overheat protection, short circuit protection, and so on. 24V 600w inverter with peak power 1200w, which is a modified sine wave, converts your car battery power to AC power 110/120 Volt or 220/230/240 Volt for options, with a safe charging design to give your device multi-protection.

How does a 24V power inverter work?

This 24V to 230V power inverter converts 24V battery output (DC) into the 230V mains output required for domestic appliances (AC). It generates pure sine wave electricity - identical to the electricity supplied by utility companies.

Does a 24V inverter use a 12V battery?

A 24V inverter works with 24V batteries to power larger appliances. Unlike what a lot of people believe, voltage does not really determine power consumption. It is possible for a boat with a 12V inverter and 12V battery to consume more power than a boat with a 24V inverter and 24V batteries.

24V small inverter

A 24V inverter is a power conversion device whose main function is to convert 24V DC power into AC power (usually 220V or 110V, depending on the specific model and application). The DC to AC power inverters offer you 110V, 120V, 220V, 230V, or 240V AC energy to charge your electronics or appliances.

Inverter for home has overload protection, overheat protection, short circuit protection, and so on. 24V 600w inverter with peak power 1200w, which is a modified sine wave, converts your car battery power to AC power 110/120 Volt or 220/230/240 Volt for options, with a safe charging design to give your device multi-protection.

This 24V to 230V power inverter converts 24V battery output (DC) into the 230V mains output required for domestic appliances (AC). It generates pure sine wave electricity - identical to the electricity supplied by utility companies.

A 24V inverter works with 24V batteries to power larger appliances. Unlike what a lot of people believe, voltage does not really determine power consumption. It is possible for a boat with a 12V inverter and 12V battery to consume more power than a boat with a 24V inverter and 24V batteries.

Learn what to look for in a 24v solar inverter, from efficiency and wattage to surge capacity and safety features. Make an informed decision today.

Finding the right 24 volt solar inverter can optimize your solar power system, whether for home, RV, or off-grid use. These inverters convert DC to AC power efficiently and ...

SUNWHEEL 3000W 24V Pure Sine Wave Inverter, 24V DC to 110V/120V AC Power Inverter for RV?Off Grid?Truck?Power Outage with 4 AC outlets and LCD Display ...

Find reliable small inverter 24v 220v solutions for home and commercial needs. High-quality, efficient inverters for solar systems and power management.

The GIANDEL 4000 Watt 24 V Pure Sine Wave Power Inverter is a robust choice for those needing reliable power conversion, especially in RVs, campers, or off-grid solar setups. ...

Our Small Inverter category includes inverters generally ranging from 125 watts to 2000 watts in 12 and 24-volt capacities. These small power ...

Find reliable small inverter 24v 220v solutions for home and commercial needs. High-quality, efficient inverters for solar systems and power management.

Our Small Inverter category includes inverters generally ranging from 125 watts to 2000 watts in 12 and 24-volt capacities. These small power inverters are great for smaller applications like ...

Choosing the best inverter for a 24V battery setup is crucial for powering sensitive electronics, appliances, and solar systems efficiently. This article reviews top-rated inverters ...

Renogy Inverter 24V 2000W Pure Sine Wave Inverter, 4000W Peak Power, Solar Car Power Inverter 24V DC to 120V AC for Truck, Home, Marine, Camping, RV, 2 AC Outputs, 16.4FT ...

24V inverters for solar systems are designed to be paired with 24V solar panels and 24V battery. This is a popular voltage for residential solar systems: 12V equipment is ...

24V 600w inverter with peak power 1200w, which is a modified sine wave, converts your car battery power to AC power 110/120 Volt or 220/230/240 Volt for options, with a safe charging ...

Contact Us

For catalog requests, pricing, or partnerships, please contact:

NKOSITHANDILEB SOLAR

Phone: +27-11-934-5771

Email: info@nkosithandileb.co.za

Website: <https://www.nkosithandileb.co.za>

Scan QR code to visit our website:

